

ADPRUFE[®] 100

Advanced admixture for integrally waterproof concrete structures to BS 8102:2009 Type B basement construction

Product Description

ADPRUFE[®]100 is an innovative liquid admixture that significantly reduces both the permeability and drying shrinkage of concrete. When used in combination with ADVA[®]superplasticizers, this enhanced concrete performance is achieved by:

- Reduced water absorption and penetration
- A significant reduction in drying shrinkage which produces fewer and thinner cracks
- A low water/cement ratio, which reduces capillary paths in the cured concrete
- High consistence concrete mix for ease of placement
- Enhanced compressive and tensile strengths at all ages.
- When ADPRUFE[®] 100 is used with ADVA[®] high performance concrete admixtures, highly effective integrally waterproof concrete is achieved. ADPRUFE[®] 100 complies with EN 934-2.

System components

- ADPRUFE[®] 100 - liquid waterproof concrete admixture
- ADVA[®] - high range water reducing/superplasticizing admixture.
- ADCOR[®] SAS 500S - the ultimate self adhesive hydro expansive waterstop system for construction joints & penetrations
- SERWISEAL[®] AT - PVC/hydrophilic co-extruded waterstop for designed movement joints
- BETEC[®] 350 - cementitious compound for sealing tie-bar holes.

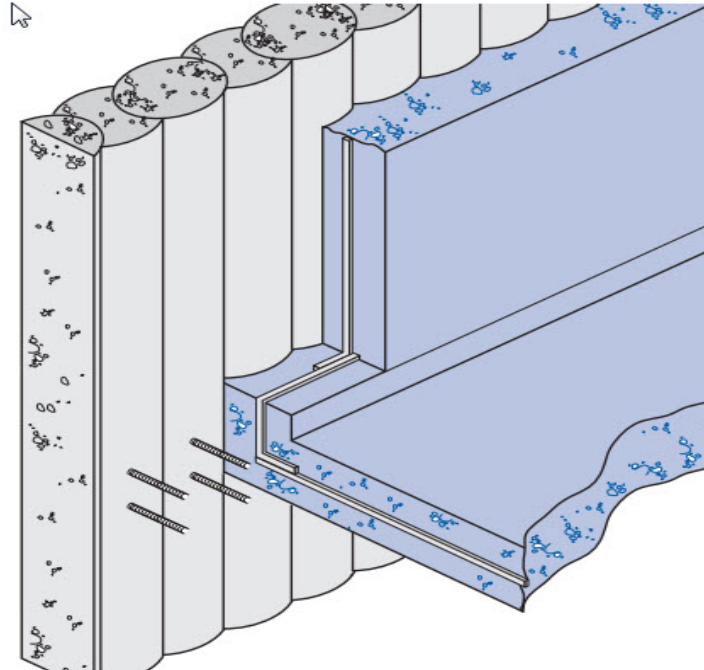
Applications

- Adprufe 100 provides structurally integral waterproofing (Type B construction) as defined in BS 8102:2009 and is suitable for Basement grades 1 to 3
- Water retaining structures
- Swimming pools
- Elevator pits
- Tunnels

Product Advantages

- Design Flexibility - Can be combined with GCP membranes or cavity drain systems for enhanced protection in critical applications providing compliance with NHBC Chapter 5.4 combined system requirements from a single source
- Reduces drying shrinkage and permeability of concrete
- Improved consistence resulting in easier, more complete compaction when containing ADVA superplasticiser
- Can be used in all types of concrete, with all types of cementitious binders

- Concentrated, liquid formulation – considerably less than other liquid systems and more easily dispersed than a powder
- No expansive agents
- Improves early strength
- Can be combined with GCP membranes or cavity drain systems for enhanced protection in critical applications



Adprufe 100 integrally waterproof concrete with secant piled retaining wall

Details shown are typical illustrations only and not working drawings. For assistance with working drawings and additional technical advice please contact GCP Technical Services

Design Criteria

Concrete structures must be designed in accordance with BS EN 1992-1-1, BS EN 1992-1-2, BS EN 1992-3 and BS 8102, or a comparable code. Concrete containing Adprufe should be designed in accordance with the requirements of BS EN 1992-1-1 having a maximum crack width of 0.3 mm; water retaining structures should be designed in accordance with BS EN 1992-3 having a maximum crack width of 0.2 mm, when the hydrostatic pressure/ wall thickness is ≤ 5 . Additional design guidance for dwellings is given in The Building Regulation Approved Document, Basements for Dwellings.

Note: Adprufe 100 is not recommended for elevated concrete decks. Adprufe 100 is not intended or recommended for use in areas where concrete is expected to be exposed to repetitive freeze/thaw cycling, unless the concrete has been air-entrained Consult GCP for further advice.

Admix Properties

- Appearance: Straw coloured clear liquid.
- Air Entrainment: Product does not entrain additional air.
- Chloride Content: Nil.
- Alkali Content: N/A
- Specific Gravity: Approx. 0.912.

ADPRUFE[®] concrete typical properties

Property	Plain Concrete	Adprufe [®] 100
ADPRUFE [®] 100 Dosage Rate (Litres/m ³)	Nil	2.5
ADVA [®] Dosage Rate % B.W.C	Nil	0.4 - 1.2%
Typical Cement Content (kg/m ³)	360	360
Effective Water / Cement Ratio	0.5	0.4
Consistence Slump Class	S3	S3
Setting Time (Minutes)	340	390
Air Content (%)	0.9	0.9
Compressive Strength (MPa)	Typical Improvement	
1 day	11	+73%
3 days	26	+65%
7 days	36	+47%
28 days	48	+42%
Water Absorption (%)	2.6	-58%
ISAT- ml/m ² /sec)		
10 minutes	0.246	-62%
30 minutes	0.125	-57%
60 minutes	0.117	-59%
Water Vapor Permeability (gm(Ns) ⁻¹)	6.60E ⁻¹⁰	-56%

Addition Rates

	ADDITON	PER
ADPRUFE [®] 100 for waterproof concrete	2.50 L	m ³
ADVA [®] Superplasticizer	400-1200 ml	100 kg of cement

Note: Optimal ADVA[®] addition rate should be determined by trial mix to ensure specified consistence and maximum water/cement ratio is achieved. Trial mixes should always use specific cements and aggregates that will be used in the concrete. For further advice, consult GCP.

All declared values shown in this data sheet are based on test results determined under laboratory conditions and with the product sample taken directly from stock in its original packing without any alteration or modification of its component parts.

Compatibility with Cements

ADPRUFE[®]100 can be used with all general purpose cements and combinations including type II additions. For use with special cements we recommend that you consult GCP.

Compatibility with Other Admixtures

As with all concrete admixtures, ADPRUFE[®]100 should not be pre-mixed with other admixtures or chemicals. The product is engineered to be used with GCP ADVA[®] superplasticizers, but must be dosed separately. Physical properties of the concrete may be adversely effected if ADPRUFE[®] is used with other admixtures and chemicals.

Delivery and Storage

ADPRUFE[®]100 is supplied in 25 and 205 liter non-returnable containers or in 1000 liter transitanks. Store under cover and protect from frost. If the product freezes, contact GCP for advice. Shelf life is 12 months in original, unopened containers. For other system components, refer to separate product data sheets.

Mix Design

ADPRUFE[®]100 is engineered for use in concrete with medium to high consistence with an effective water/ cement ratio of 0.40 – 0.45. GCP recommend the use of ADVA[®] superplasticizers (see separate product data sheet).

Where alternative superplasticizers are used, ensure they produce the specified consistence and effective water/cement ratio, at the equivalent cement content. When non GCP superplasticizer is being considered we recommend trial mixes to ensure compatibility. For further advice consult GCP.

Dispensing

It is preferable that ADPRUFE[®]100 should be introduced into the mixer by means of automatic dispensing equipment.

Concrete Placement

Place concrete in accordance with the recommendations of BS 8000 1990 Section 2.2. Fully compact all concrete using best practices. Do not place concrete when ambient temperatures are 5 °C or less. Refer also to ADPRUFE[®] Technical Bulletins for guidance.

Curing

Concrete should be cured in accordance with the recommendations given in BS EN 13670.

Health and Safety

Read the product label and Safety Data Sheets before use. Users must comply with all risk and safety phrases. SDS's can be obtained from GCP Applied Technologies or from our web site at gcpat.com.

gcpat.it | Servizio clienti in Italia:: +39 02 93537291

Confidiamo che le informazioni date con la presente siano utili. Sono basate su dati e conoscenze che riteniamo vere ed accurate e sono messe a disposizione dell'utente perché li consideri, facendo le opportune verifiche. Tali informazioni non rientrano nei nostri obblighi quali fornitori e per esse nessun compenso, esplicito o implicito, viene richiesto e/o viene dato. Anche per questo non assumiamo alcuna responsabilità per l'uso di tali informazioni e per i risultati che possono essere ottenuti. Nessuna informazione, raccomandazione o suggerimento può essere intesa ad un impiego in un processo che violi qualsiasi brevetto, copyright o diritto di terzi.

ADPRUFE sono marchi registrati della GCP Applied Technologies Inc in USA o in altri stati. Questa lista di marchi registrati è stata composta usando le informazioni disponibili alla data di pubblicazione e potrebbero non riflettere accuratamente la proprietà o lo status di essi.

© Copyright 2017 GCP Applied Technologies Inc. Tutti i diritti riservati.

GCP Applied Technologies Inc., 2325 Lakeview Parkway, Alpharetta, GA 30009, USA

GCP Italiana S.p.A. - Via Trento, 7 - 20017 Passirana di Rho, Milano, Italy

Questo documento è aggiornato solo a partire dalla data dell'ultimo indicato di seguito ed è valido solo per l'uso in Italia. È importante consultare sempre le informazioni attualmente disponibili sull'URL di seguito per avere le informazioni sul prodotto più recenti al momento dell'uso. Documenti aggiuntivi come i manuali di utilizzo, bollettini tecnici, disegni dettagliati e raccomandazioni dettagliate e altri documenti rilevanti sono disponibili anche su www.gcpat.fr. Le informazioni trovate su altri siti web non dovrebbero essere utilizzati, in quanto potrebbero non essere aggiornati o applicabili alle condizioni del tuo paese e non ci assumiamo alcuna responsabilità quanto al loro contenuto. In caso di conflitti o se hai bisogno di ulteriori informazioni, contatta il servizio clienti di GCP.

Last Updated: 2022-11-24

gcpat.it/solutions/products/adprufe-100